



Step Up! Into Life after High School Session 5

How do I pay for it 4; Medicaid Waiver programs, Compare and contrast the services available on each waiver and the reimbursement rates for providers, Basic Funding for each waiver and Waitlists.

What You Will Learn

- Eligibility for the waivers
- Compare and contrast the services available on each waiver.
- The waiver application process and barriers to accessing services.
- Basic Funding for each waiver
- Waitlists

What public programs offer help in paying for health care services?

Home and Community Based Services (HCBS) Medicaid Waivers:

- These programs provide additional Medicaid benefits to specific populations who meet special eligibility criteria.
- Individuals must meet medical and program criteria to access services under a waiver.
- Financially, they can earn up to 3 times more than just SSI.
- An individual who receives services through a waiver is eligible for all basic Medicaid covered services except nursing facility and long-term hospital care.
- There is only one waiting list for one of the adult waivers.
- Families can apply at either their County Dept. of Human Services, Community Centered Board, or their Single-Entry Point Agency.

Who Qualifies for services?

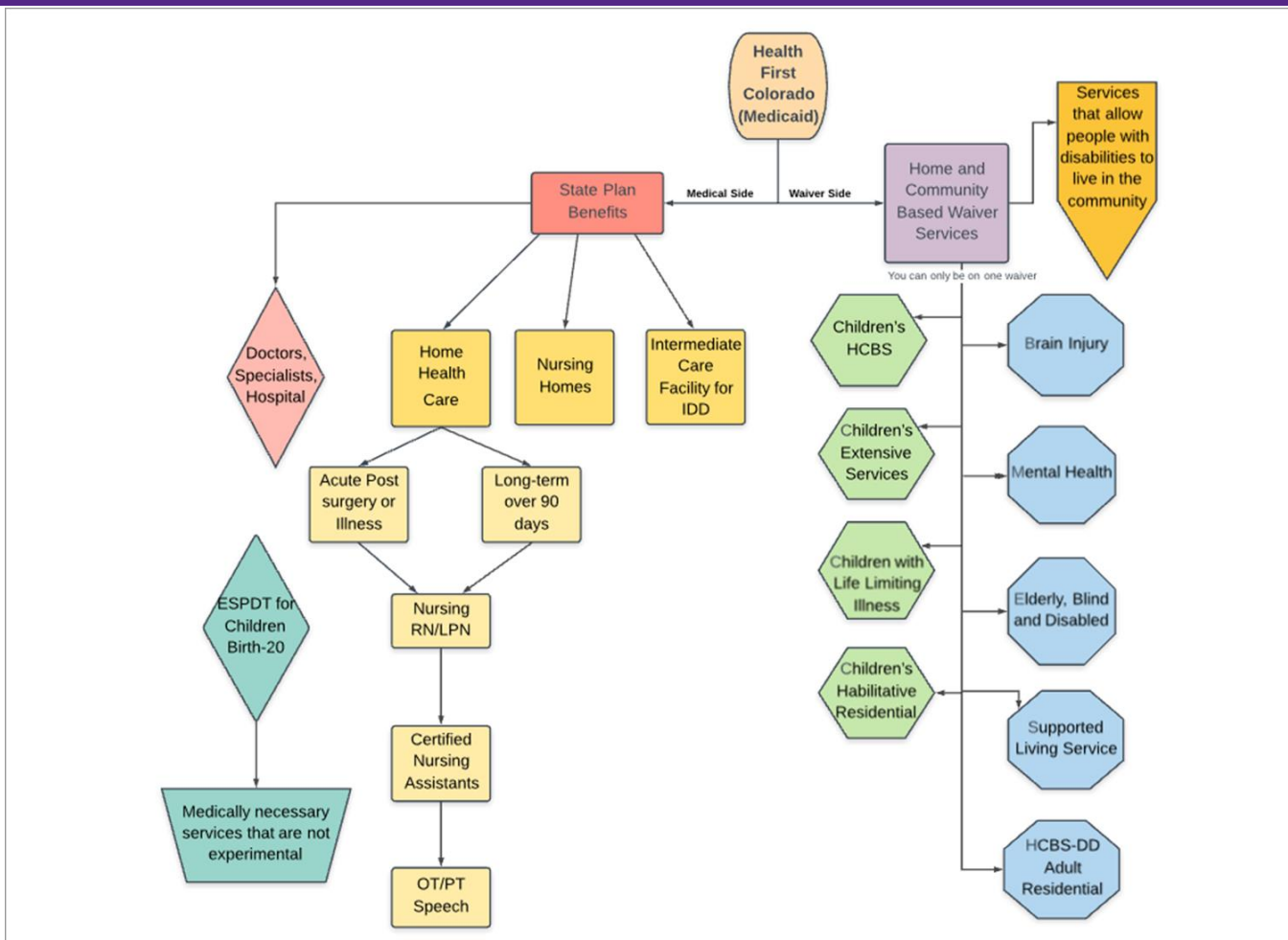
- Home and Community Based Services (HCBS) waivers use qualifying criteria to target specific populations.
- Colorado has five adult waivers, two of which specifically target individuals with I/DD. Some individuals may qualify for more than one waiver.
- Each waiver has varying criteria on disabilities and age, but all have income requirements (restrictions on how much an individual can earn in order to qualify).
- In the next slides we will focus on Private Insurance, Medicaid Single Entry Point (SEP), Community Centered Boards (CCBs) and Case Management (CM).

Crash Course in Medicaid

- Think of Medicaid like a house.
 - There are many ways to get in and each point of entry entitles the individual to different services.
- Medicaid is NOT Medicare.
 - These are two distinct programs. This program will focus on Medicaid.
- Think of the HCBS Child/Adult Waivers as different rooms in the Medicaid house.



Crash Course in Medicaid



Single Entry Point (SEPs)

- Single Entry Point (SEP) Agencies operate the following waivers:
 - Children's HCBS Waiver (CHCBS) not really a waiver
 - The Children's Extensive Support Waiver (CES)*
 - Children with Life Limiting Illness (CLLI)
 - Children's Habilitation Residential Program Waiver (CHRP) (Run by the county, with CCB support)
 - Brain injury (Adult)
 - Elderly, blind and disabled (EBD) (Adult)
 - Supported Living Services (SLS) (Adult)*
 - Persons with Developmental Disabilities (DD/Comp) (Adult)*
 - Mental health (MI) (Adult)

Single Entry Point (SEPs)

- **Single Entry Point (SEP) Agencies**
 - Provide case management
 - Care planning
 - Make referrals to other resources for Health First Colorado (Colorado's Medicaid Program) members

- **Support for IDD specific waivers are run by Community Centered Boards (CCB)***

Community Centered Boards

Provide case management services assist a person in accessing necessary services and supports to meet his or her needs.

Services include:

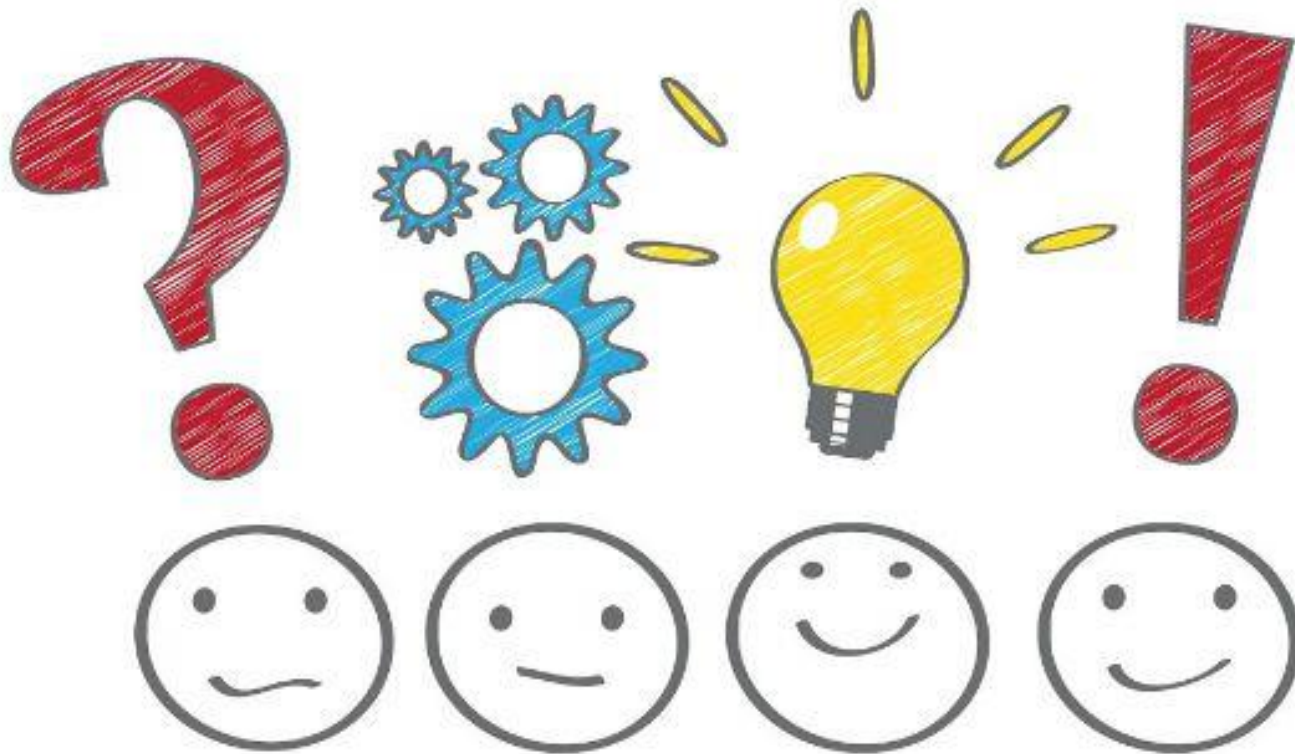
- Intake,
- Eligibility determination
- Service plan development
- Arrangement for services
- Delivery of services
- Service and support coordination
- Monitoring
- Any safeguards necessary to prevent conflict of interest between case management and direct service provision
- Termination and discharge from services.
- Case Management

Case management is assistance provided by a case management agency on behalf of an eligible member, which includes referral of needed Health First Colorado (Colorado's Medicaid Program) services and supports that enable the member to remain in his/her community-based setting.

A case manager is responsible for:

- Assessing a member's long-term care needs
- Developing and implementing a care plan for the member
- Coordinating and monitoring the delivery of long-term care services
- Evaluating the effectiveness of the services
- Periodically re-assessing the member's needs

Questions?



Comparing & Contrasting Adult Waivers: Supported Living Services (SLS) & Developmental Disabilities (DD)

Supported Living Services Waiver (SLS)

The Supported Living Services Waiver (SLS) is a program to provide supported living in the home or community to persons with developmental disabilities.

Criteria for SLS

In order to be enrolled in SLS you must:

- Be 18 years of age and older
- Be able to live independently with limited supports or, if you need extensive supports, are already receiving that high level of support from other sources, such as your family
- Be currently residing in, or be at risk of being institutionalized in an Intermediate care facility
- Have income less than 300% (3 times – 2016 - \$2,199) the Supplemental Security Income allowance per month
- Have countable resources less than \$2,000 for a single person or \$3,000 for a couple.

Services in SLS

- Homemaker Basic
- Homemaker Enhanced
- Supported Community Connections (Community based services)
- Specialized Hab (Site based Services)
- Respite
- Personal Care (if the individual is over 21)
- Supported Employment
- Prevocational Services
- Mentorship
- Non-Medical Transportation
- Behavioral Services
- Professional Services (Hippo, Movement, Massage Therapy)
- Home Modifications/Vehicle Modifications/Assistive Technology
- Adaptive Rec
- Vision
- Dental (Basic and Major)
- Specialized Medical Equipment
- Personal Emergency Response System
- CDASS (Consumer Directed Attendant Support Services)

CDASS (Consumer Directed Attendant Support Services)

- Colorado Consumer Directed Attendant Support Services (CDASS) was established in 2002
- Giving Medicaid Home and Community-Based Services (HCBS) waiver recipients (individuals) the opportunity to direct their care and have full control over their attendant support services.
- Individuals hire, train and manage Attendants of their choice to best fit their unique needs.
 - Through CDASS, Clients may receive personal care, homemaker and health maintenance services rather than working through a home health or personal care agency.
- Clients in CDASS work closely with Case Managers to determine the amount of services needed to support assessed needs.
- Clients are able to use Medicaid dollars to pay for services.
- Some services count towards the Service Plan Authorization Level (SPAL), one is not.

CDASS (Consumer Directed Attendant Support Services)

- Lets you direct and manage the attendants who provide your personal care, homemaker and health maintenance
- Benefits and Services
 - You work closely with your case manager to determine what services you need. You are able to use Health First Colorado dollars to pay the attendant of your choice rather than a home health agency or personal care agency. You manage your own Health First Colorado funds, giving you increased choice and control. This flexibility enables you to manage the services you need to live independently and to more fully participate in your community.
- Personal Care includes assistance with activities such as bathing, dressing or eating. (Part of SPAL)
- Health Maintenance includes assistance with health-related activities that are typically provided by a certified or licensed attendant, such as a CNA, LPN or RN. In CDASS, the Nurse Practice Act has been waived so that members have the flexibility to hire and train staff without certifications or licensure. (Not part of SPAL, has its own budget).
- Homemaker Services include assistance with general household activities needed to maintain a healthy and safe living environment, such as housekeeping, meal preparation and laundry. (Part of SPAL)

CDASS is available to individuals who meet the following eligibility requirements:

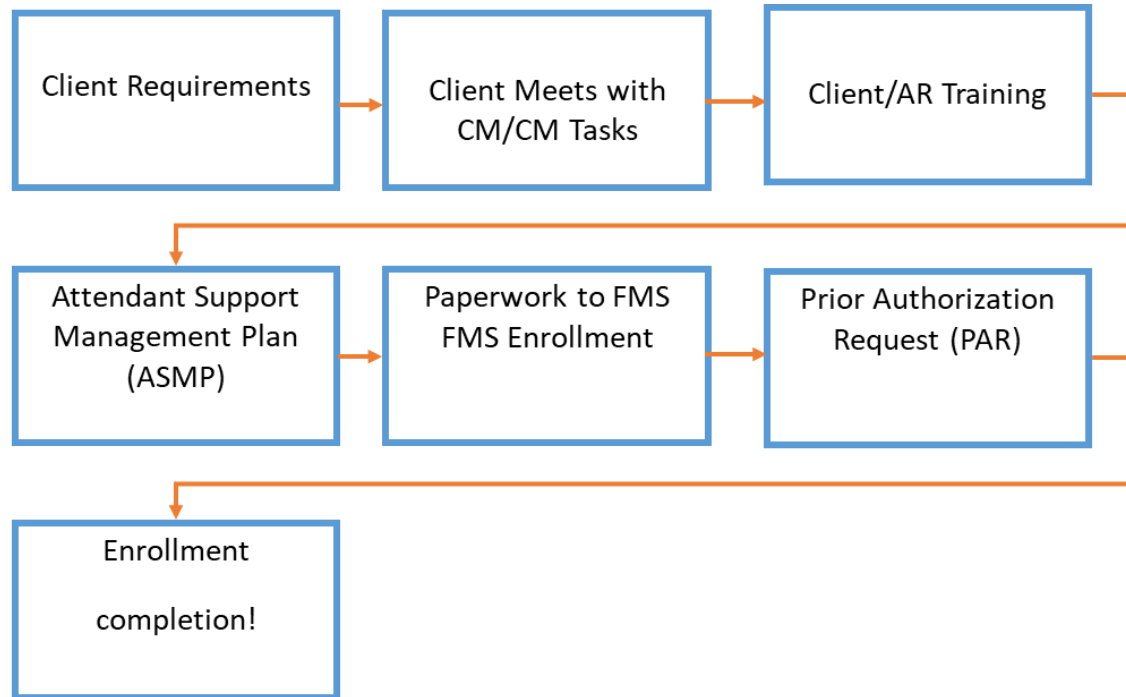
- Medicaid members who qualify for one of the HCBS waivers in which CDASS is an approved service delivery option.
- Demonstrated need for personal care, homemaker or health maintenance services.
- Stable health and ability to direct own services or assign an Authorized Representative (AR).
- **Authorized Representative (AR):**
 - If a doctor indicates a Client requires assistance with certain responsibilities, or if a Client wants help with all or certain aspects of directing care, the CDASS service delivery option allows for the Client/guardian to choose to delegate these responsibilities to an AR.
 - An AR in CDASS has different responsibilities than an SLS Client Representative.

Services in SLS

CDASS Enrollment Steps

Note: Average enrollment timeline is 3-4 months

*Consumer Direct Care Network, 2018



CDASS is intended to:

- Increase independence and self-sufficiency.
- Offer greater control over attendant care.
- Improve the quality of support services.
- Enable Clients to have a healthier and more productive life.
- Provide opportunity for greater flexibility and control in managing support needs.

. For more information:

<http://consumerdirectco.com/sls-training-manual/>

Or call 844-381-4433, and ask for the Colorado location

Developmental Disabilities (DD) AKA: Residential or Comp

The Waiver for Persons with Developmental Disabilities provides people with developmental disabilities services and supports that allow them to continue living in the community.

To qualify for the DD waiver, you or the person applying must:

- Be 18 or older
- Need extensive supports to live safely, including access to 24-hour supervision, and do not have other resources to meet those needs
- Meet the medical criteria:
- Residing in or at risk of residing in an Intermediate Care Facility for Individuals with Intellectual Disabilities (ICF/IID)
- Determined to have a developmental disability
- Meet the financial Criteria:
- Income must be 300% the Supplemental Security Income allowance per month
- Countable resources less than \$2,000 for a single person or \$3,000 for a couple

Services in DD/Comp

- Supported Community Connections (Community based services)
- Specialized Hab (Site based Services)
- Supported Employment
- Prevocational Services
- Non-Medical Transportation
- Behavioral Services
- Vision
- Dental (Basic and Major)
- Specialized Medical Equipment
- Residential

Compare and Contrast the Eligibility Criteria for SLS and DD

- Ages and financial requirements are the same.
- Both waivers target individuals with I/DD and are accessed through a Community Centered Board (CCB).
- Both require an ICF-I/DD Level of care.
- Notable differences:
 - SLS is targeting individuals who can live independently with supports.
 - DD is targeting individuals who need extensive supports including access to 24-hour supervision.
- **Stop to think and ask! Does my loved one qualify for both of these waivers? If Yes for SLS then they do for DD too.**

Compare and Contrast Services & Supports for SLS and DD

- Both waivers provide for Day Habilitation Services (day programs), Dental Services, Supported Employment, Prevocational Services, Transportation, Specialized Medical Equipment and Supplies, and Vision services.
- Rates for services will differ depending on SIS score and some services have limits
- Notable differences:
 - DD provides for residential services (individual or group)
 - Homemaker, personal care, C.N.A level of care,
 - SLS provides for assistive technology, respite, home & vehicle modifications, Professional Services, Personal Response Systems and CDASS.

Funding & the Supports Intensity Scale (SIS)

- Once your son or daughter is offered a waiver resource, they will need to go through an assessment call the Supports Intensity Scale (SIS).
- This is an evidence-based, norm referenced tool that was developed by AAIDD to measure the levels of supports that people with I/DD need to live like typical adults in the community.
- CO has chosen to use this tool to determine rates for services provided through the SLS and HCBS-DD waivers.
- In the SLS waiver CO has chosen to use this tool to determine Service Plan authorization Limits (SPAL).

- Service Plans (Supports) cannot exceed ones Service Plan authorization Limits (SPAL) for all services combined.
- A SPAL is based on ones SIS
 - CDASS is partly in the SPAL and partly outside the SPAL
- Some services have hard funding caps
- Home Modifications/Vehicle Modifications/Assistive Technology do not come out of SPAL unless your SPAL is a level 5 or higher.

Figuring out the Budget SLS

- What is your SIS Level?
- Do you have a Service Plan Authorization Limit?
- How many hours of service can you get?
- Can part of the needed services be covered through Medicaid State Plan Home Health?
 - CNA
- Does the person already have a place to live?
- Create a Personal story

Funding /Limits DD

- No overall cap on total funding (No SPAL)
- Funding limits per service
 - Services are based on the total service allowed, not funding.
- Less options in services
 - No Professional Services (Hippo, Movement, Massage Therapy), Respite, Personal Care, Mentorship, Home Modifications/Vehicle Modifications/Assistive Technology, Adaptive Rec, Personal Emergency Response System or CDASS.
 - As all of these are “quote” incorporated into the Residential rate

SLS

- No
- Openly enrolling
- Funding is currently set on the State always adjusting the resources, but this is not guaranteed to continue forever.

HCBS-DD

- Yes
- Currently no open waiver slots
- Exceptions can be made for health and safety concerns with an emergency request due to meeting one of the following:
 - Homelessness
 - At risk of seriously hurting themselves or others
 - In a neglectful/abusive situation
- Not guaranteed upon the passing of the caregiver
- Can pick if coming off the CES waiver or CHRP.

Connecting the Dots

- What does your son or daughter want to do/accomplish?
- What services do they need to get there?
- Can they be left alone in the home?
- What will they do during the day - can they do any of this alone?
- The answers to some of these questions will impact which waiver you want to select.

Service Delivery Options

- Consumer Directed Attendant Supports
 - Not available in the HCBS-DD Waiver
 - Available in the SLS waiver
- Family Caregiver Act
 - Services in the Family Home
 - Family members can be paid to provide services
- The Family Owned PASA
 - Please follow The Arc Arapahoe & Douglas Counties for in-depth videos on these topics!



Arapahoe & Douglas Counties

6538 South Racine Circle
Centennial, CO 80111

T: 303.220.9228

F: 303.220.0994

E: Luke@arc-ad.org



www.arc-ad.org



[TheArcArapahoeDouglas](https://www.facebook.com/TheArcArapahoeDouglas)



[ArcArapDoug](https://twitter.com/ArcArapDoug)



[thearc-arapdoug](https://www.instagram.com/thearc-arapdoug)

FOR PEOPLE WITH INTELLECTUAL AND DEVELOPMENTAL DISABILITIES

Achieve with us.