



The Arc[™]

Arapahoe & Douglas Counties

Building Blocks: Session 4

Navigating the Child Waiver
programs

FOR PEOPLE WITH INTELLECTUAL AND DEVELOPMENTAL DISABILITIES

Achieve with us.

What You Will Learn

- How to choose a waiver
- Eligibility for the child waivers
- Compare and contrast the services available on each waiver
- Understand the steps in the waiver application process and barriers to accessing services.
- Basic Funding for each waiver

Choosing a HCBS Waiver for Children

- What is your child not able to do that another child of the same age could do?
- When walking do you have to hold his/her hand?
- How much do you rely on friends/family to take care of your child due to his/her unique needs?
- What services are you hoping to gain? For instance:
 - Does your child need in-home care?
 - Does your child need therapy for their behaviors?
 - Do you need respite care for your child?
 - Is he/she able to use the bathroom by themselves?

What is the difference between Health First Colorado and Home and Community Based Services

Health First Colorado provides its members with base medical benefits.

- These benefits (sometimes referred to as State Plan Benefits) include:
 - Primary Care,
 - Pharmacy,
 - Home Health, and
 - Dental Services
 - Among many more
 - Some of these benefits have restrictions.

Home and Community Based Services (HCBS) are additional benefits within Health First Colorado:

- Designed to allow individuals at risk for institutional placement to remain in the community.
- A person is said to be at risk for institutional care/placement if his/her needs require care that would typically be provided through a hospital, nursing facility, or intermediate care facility.

The Long Term Care assessment (100.2)

- A Long-Term Care assessment helps the state understand how much help your child needs with Activities of Daily Living (ADLs) which are:
 - bathing, dressing, toileting, eating, mobility, transfers, memory cognition and behavioral.
- Determining their functional needs is one component of eligibility for HCBS waivers.
- Case Managers from Single Entry Point (SEPs) agencies and Community Centered Boards (CCBs) will meet with you in person to complete the Long-Term Care assessment.

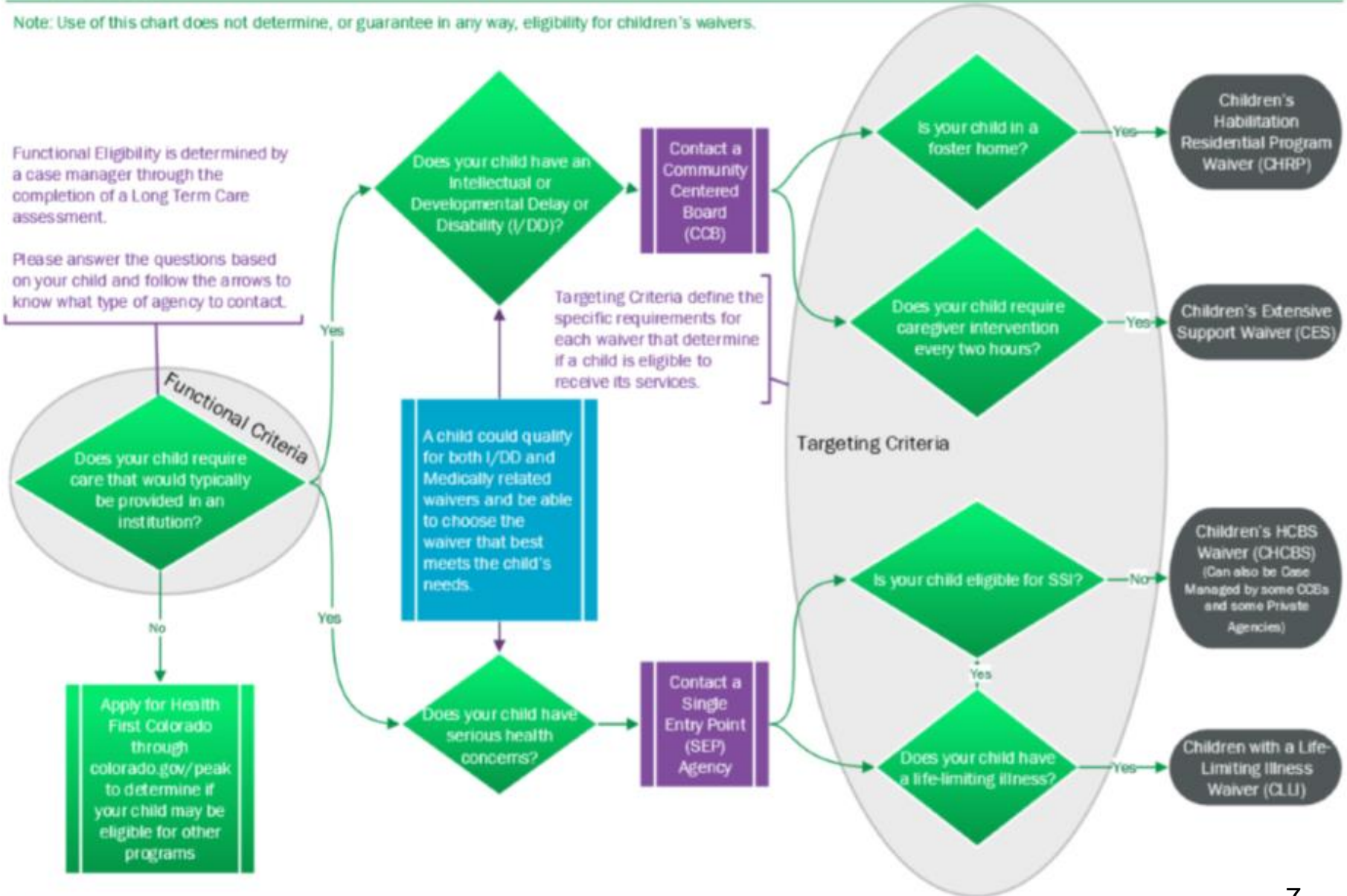
- Ages & Stages:
- Developmental milestones refer to abilities achieved by most children by a certain age.
- Milestones are used to gauge how a child is developing.
 - Although each milestone has a suggested age, the actual age when a developing child reaches that milestone may vary.
- The Ages & Stages document developed by Iowa State University provides guidance for the typical child's developmental milestones.
- Case Management Agencies must complete a Long Term Care assessment based on the age and stage of a child at the time of the assessment (Completed yearly).

Choosing an HCBS Waiver for Children

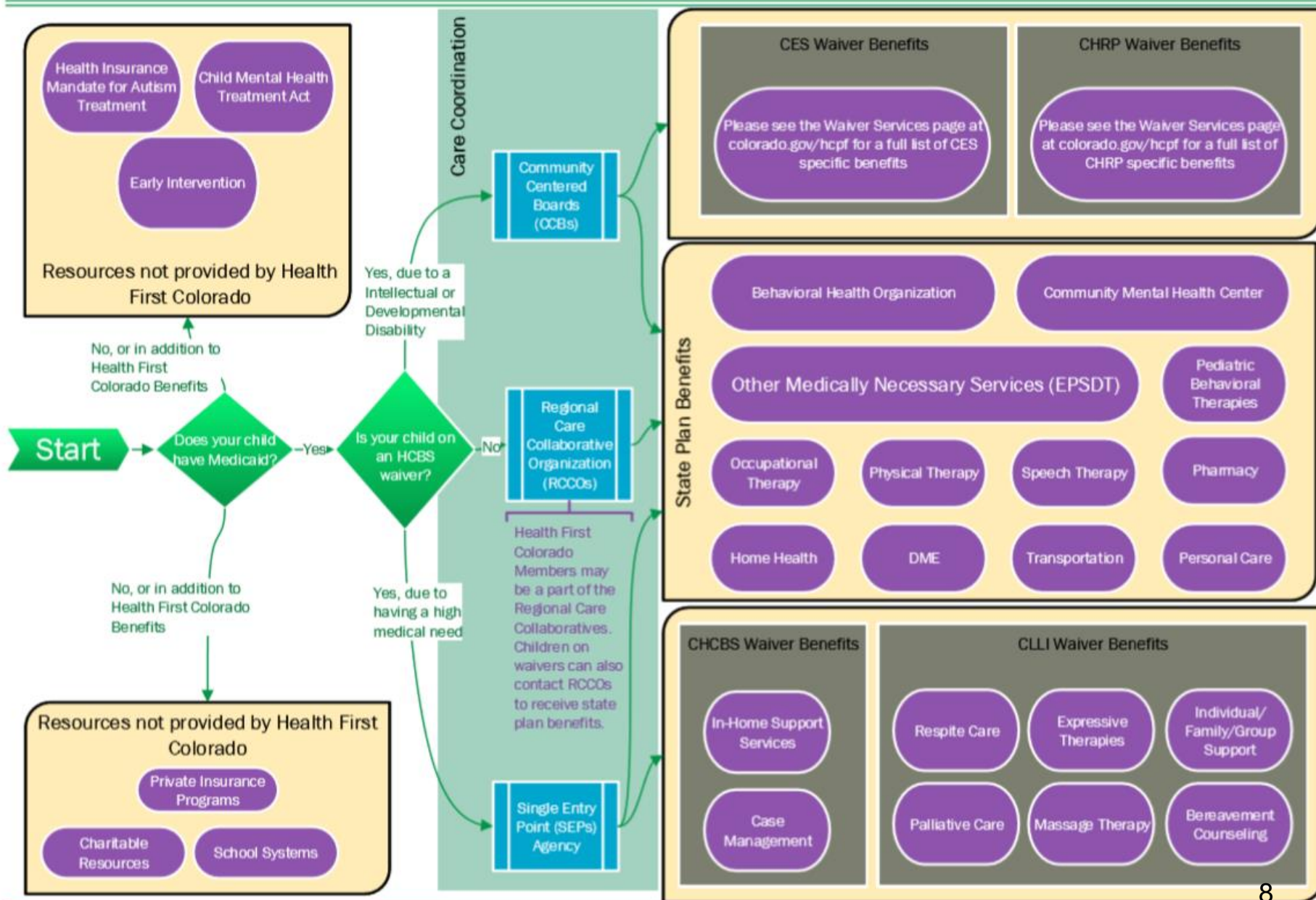
Note: Use of this chart does not determine, or guarantee in any way, eligibility for children's waivers.

Functional Eligibility is determined by a case manager through the completion of a Long Term Care assessment.

Please answer the questions based on your child and follow the arrows to know what type of agency to contact.



Finding HCBS Services (Children)



Children's HCBS Waiver (CHCBS)

The Children's Home and Community-Based Services Waiver (CHCBS) provides a home or community based alternative to children with significant medical needs who are at risk for acute hospital or skilled nursing facility placement.

Children's HCBS Waiver (CHCBS)

- Who Qualifies?
 - Your child must meet the following financial and program criteria to access services under this program. To use waiver benefits, your child must also be willing to receive services in your home or community.
- Eligibility Group
 - Your child must not have reached his/her 18th birthday.
 - Your child requires medical care that would typically be provided in either a skilled nursing facility and/or an acute hospital.
- Level of Care
 - Your child must need long-term support services at a level comparable to services typically provided in a skilled nursing facility and/or an acute hospital.
 - Your child must meet the Social Security Administration (SSA) definition of disability.

Children's HCBS Waiver (CHCBS)

Financial

- Your child's income must be less than three times the current Federal Supplemental Security Income (SSI) limit per month (See SSI website for current information) and his or her countable resources must be less than \$2,000.
- Due to your income and/or resources, your child would not be otherwise eligible for Health First Colorado.

Benefits and Services

- Case Management services
- In-Home Support Services

Apply through the local Single Entry Point (SEP) Agency

In-Home Support Services (IHSS)

In-Home Support Services (IHSS) lets you direct and manage the attendants who provide your personal care, homemaker and health maintenance services, with the added support of an agency.

- Through IHSS, you are empowered to select, train and manage attendants of your choice to best fit your unique needs or you may delegate these responsibilities to an Authorized Representative.

Benefits and Services

- Personal Care includes assistance with activities such as bathing, dressing or eating.
- Health Maintenance includes assistance with skilled health-related activities that are typically provided by a certified or licensed attendant, such as a CNA, LPN or RN. In IHSS, the Nurse Practice Act has been waived so that members have the flexibility to hire and train staff without certifications or licensure.
- Homemaker Services include assistance with general household activities needed to maintain a healthy and safe living environment, such as housekeeping, meal preparation and laundry.

Children with Life Limiting Illness (CLLI)

The Waiver for Children with Life Limiting Illness provides a home or community-based alternative to children with a life limiting illness.

Children with Life Limiting Illness (CLLI)

Eligibility Requirements: Children who are:

- Ages 18 and younger Receiving hospital level of care.
- Determined by case manager to be safely served in the community
- Receiving at least one CLLI waiver benefit per month while enrolled in the waiver

Meet the medical criteria:

- Physician-certified diagnosis of a Life Limiting Illness
- Disability determination by the Social Security Administration
- Meet the financial criteria:
 - Income is less than 300% the Supplemental Security Income allowance per month
 - Countable resources less than \$2,000

Children with Life Limiting Illness (CLLI)

Benefits:

- Counseling/Bereavement Services
- Expressive Therapy
- Massage Therapy
- Palliative/Supportive Care
- Respite Care Services

Apply through the local Single Entry Point (SEP) Agency

The Children's Extensive Support Waiver (CES)

It provides supports and services to children with developmental disabilities or delays who have a complex behavioral or medical condition and who require near constant line of sight supervision.

The Children's Extensive Support Waiver (CES)

- Children 18 years of age and younger with intensive behavioral or medical needs who are at risk of out-of-home placement and have been determined to have a developmental delay/disability through a Community Centered Board
- Child must be institutionalized or at risk of being institutionalized in an Intermediate Care Facility for Individuals with Intellectual Disabilities (ICF/IID)
- Children's income must be less than 300% (3 times) the Supplemental Security Income allowance per month and countable resources less than \$2000
- Apply through the local Community Centered Board (CCBs) Agency
- **Benefits:**
 - Adaptive Therapeutic Recreational Equipment and Fees
 - Assistive Technology
 - Community Connector
 - Home Accessibility Adaptations
 - Homemaker Services
 - Parent Education
 - Professional Services
 - Respite Services
 - Specialized Medical Equipment & Supplies
 - Vehicle Adaptations

Children's Habilitation Residential Program Waiver (CHRP)

The Children's Habilitation Residential Program Waiver provides residential services for children who have a developmental disability and very high needs. Their needs for support put them at risk for institutional care. Waiver services help children and youth learn and maintain skills needed to live in their communities.

[The CHRP waiver is administered through CCBs]

Children's Habilitation Residential Program Waiver (CHRP)

Who Qualifies?

■ *Level of Care*

- Meet eligibility for developmental disability services through CCBs
- Have extraordinary needs - At Risk for out of home placement as determined by the ICAP
- Meet intermediate care facility for Individuals with intellectual disabilities
- Services needed by the child can't be provided under county negotiated rates.

■ *Eligibility Group*

- The child is at risk of being placed through a County Department of Social Services.
- The child is under 21 years old.
- The child has a developmental disability and very high service needs.

Children's Habilitation Residential Program Waiver (CHRP)

■ Benefits:

- Community Connection Services
- Habilitation Services (*all below are part of residential services)
 - Cognitive Services*
 - Communication Services*
 - Emergency Assistance Training*
 - Independent Living Training*
 - Personal Care Services*
 - Self-Advocacy Training*
 - Supervision Services*
 - Travel Services*
- Respite Services
- Professional Services (Hippotherapy, Massage and Movement Therapy)
- Intensive Support
- Transition Support- High Fidelity Wrap Around - transition can be into facility or out of facility.

Contact Info

Single Entry Points:

- Rocky Mountain Human Services - Single Entry Point
- 9900 E. Iliff Avenue
- Denver, CO 80231

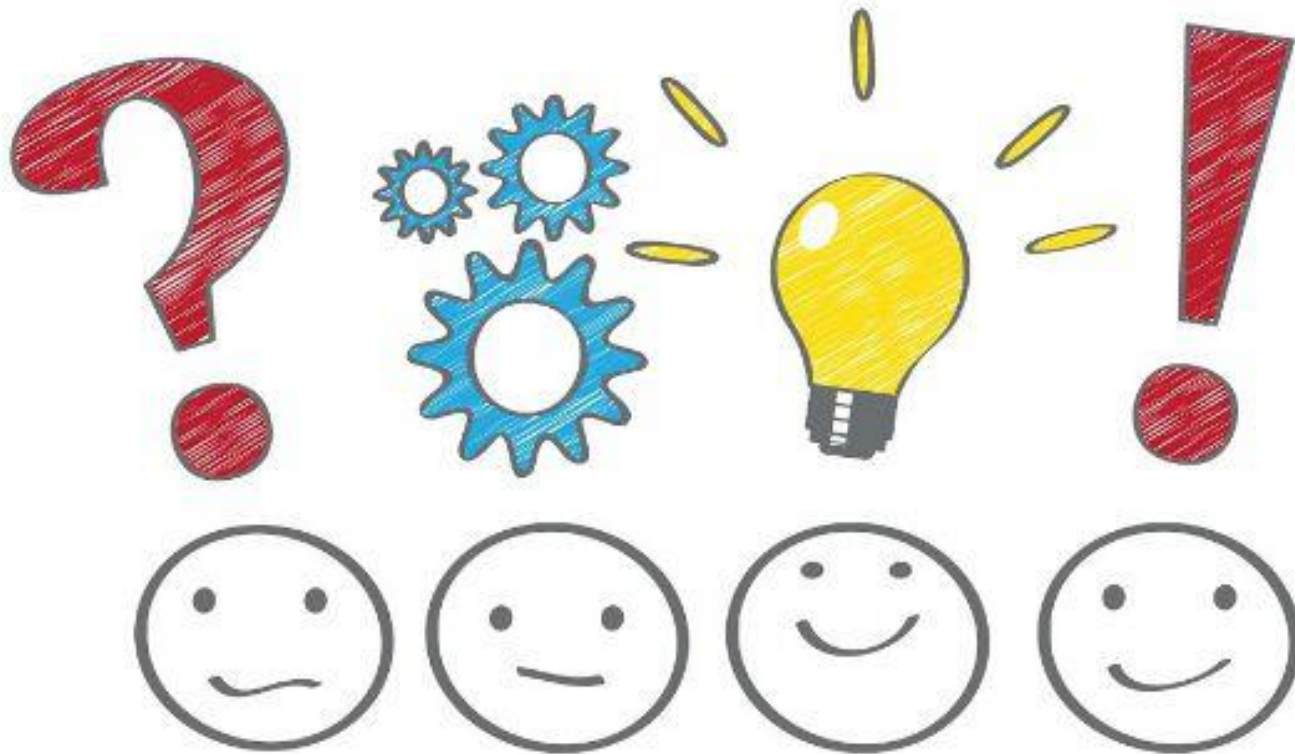
- Main Phone: 1-844-790-RMHS (7647)

- Website: www.rmhumanservices.org

- County Contact number:
 - Douglas Phone: (303) 688-4825
 - Arapahoe Phone: (303) 636-1130

- Community Centered Boards Intake phone number:
 - Developmental Pathways: (303) 858-2260
 - Arapahoe and Douglas Counties (and the city of Aurora)
 - Rocky Mountain Human Services: (303) 636-5862
 - Denver County
 - Developmental Disabilities Resource Center (303) 233-3363
 - Jefferson, Summit, Gilpin and Clear Creek counties
 - North Metro Community Center (303) 457-1001
 - Adams County (Excluding the City of Aurora)

Questions?





Arapahoe & Douglas Counties

6538 South Racine Circle
Centennial, CO 80111

T: 303.220.9228

F: 303.220.0994

E: Luke@arc-ad.org



www.arc-ad.org



[TheArcArapahoeDouglas](https://www.facebook.com/TheArcArapahoeDouglas)



[ArcArapDoug](https://twitter.com/ArcArapDoug)



[thearc-arapdoug](https://www.instagram.com/thearc-arapdoug)

FOR PEOPLE WITH INTELLECTUAL AND DEVELOPMENTAL DISABILITIES

Achieve with us.